

Building Capability, Creating Professionals



Applying the CDEM Competency Framework

Overview

- Introduction to CDEM
- Background to the CDEM Competency Framework
- Role maps
- Applying the Framework



'Who' is CDEM?



Where?

Why?

How?

When?



A cartoon illustration of two dolphins in the water. The larger dolphin on the left has a speech bubble that says "ALL THE ACTIVITIES HAVE A PORPOISE!". The smaller dolphin on the right has a speech bubble that says "SHE MEANS PURPOSE!".

What is it?



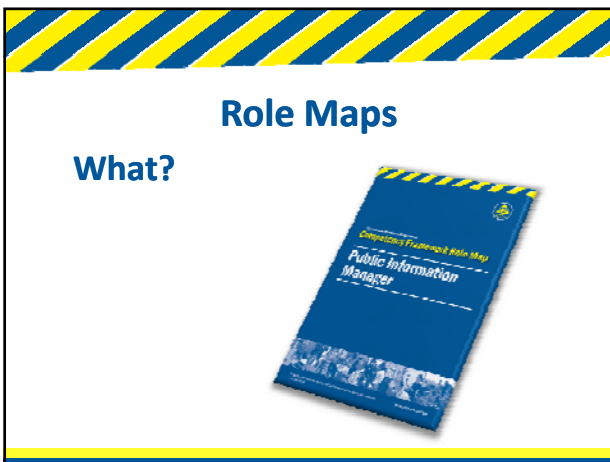
A blue document cover titled "21st Century Competency Framework" with a circular graphic and a photo of a group of people. The text "Building Capability, Creating..." is visible at the bottom.

What the?!?!



A cartoon illustration of Superman standing on a small green hill. He is holding a tomato in his right hand and pointing upwards with his left. Above him is the text "THE PURSUIT OF TRUTH ATTRACTS CRITICS.".





Role Maps


What?

CM04 Media are engaged in public information management and public education	
Skills specific to this competency	Knowledge specific to this competency
<p>Is able to:</p> <ul style="list-style-type: none"> ○ accurately apply prescribed media engagement protocols during a response. ○ identify and prioritise key media, locally, regionally, and nationally. ○ effectively interact with the media. ○ participate in media interviews. ○ develop a request for a broadcast message, consistent with MOU. ○ act as spokesperson for the Controller, CDEM Group or own organisation when and if required. ○ organise and manage a media conference. 	<p>Knowledge of:</p> <ul style="list-style-type: none"> ○ media requirements and how the media works. ○ media conference and interview protocols and processes.

Role Maps

What?

How?



Role Maps

What?

How?

Response?





Role Maps

What?

How?

Response?

Application?


Applying the Competency Framework

- **Toolkit**



Applying the Competency Framework

- Toolkit 
- **DNA Best Practice Guide**







Applying the Competency Framework

- Toolkit 
- DNA Best Practice Guide 
- **NCMC Learning Framework**



Applying the Competency Framework

- Toolkit 
- DNA Best Practice Guide 
- NCMC Learning Framework 
- **RAPID** 

Questions?

Comments?

Now what?

- Where to from here?



Now what?

- Where to from here?
- Sharing our resources